

The NASSAU

PLAN D

TWO-STORY

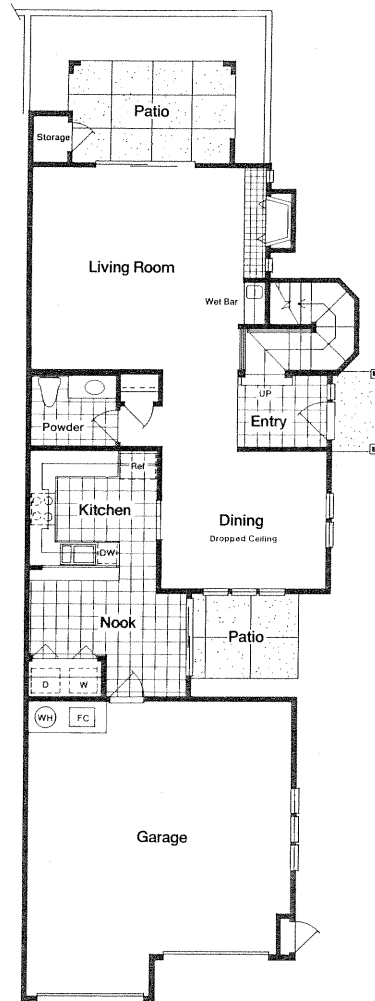
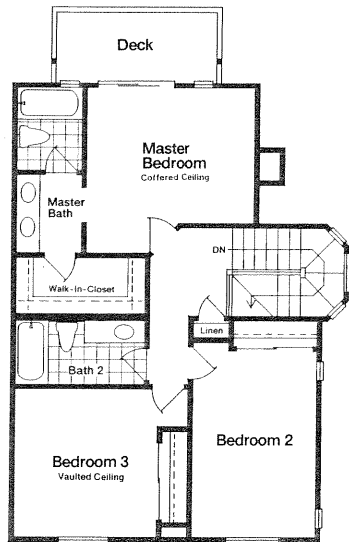
THREE BEDROOMS

TWO AND ONE-HALF BATHS

APPROXIMATELY 1,810 SQUARE FEET

TWO-CAR ATTACHED GARAGE

The sumptuous Nassau. Natural light and bay breezes from two private patios enliven this home's formal areas. Both the intimate breakfast nook and romantic formal dining room look out onto a charming front patio. Upstairs, the master bedroom features a private bath, a dressing area with walk-in closet, and an ample deck for seeing and sunning. Two spacious secondary bedrooms are perfect for guests or a home office.



The MONTSERAT

PLAN E

TWO-STORY

TWO BEDROOMS

TWO AND ONE-HALF BATHS

APPROXIMATELY 1,590 SQUARE FEET

TWO-CAR ATTACHED GARAGE

The Montserrat... refined and sophisticated. Two unusually large and airy master bedroom suites (one with a fireplace) occupy this wonderful plan's entire upstairs. Downstairs, the impressive design continues with an oversized patio adjoining the living and dining rooms. Completing this level are a formal foyer leading to an ample kitchen and sunlit breakfast nook.

