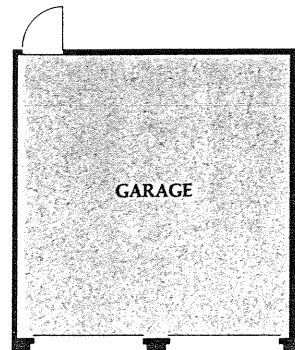
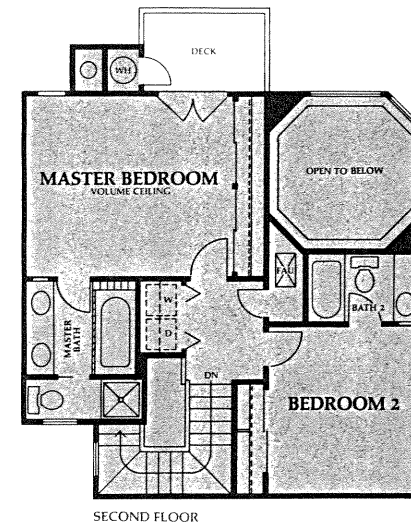
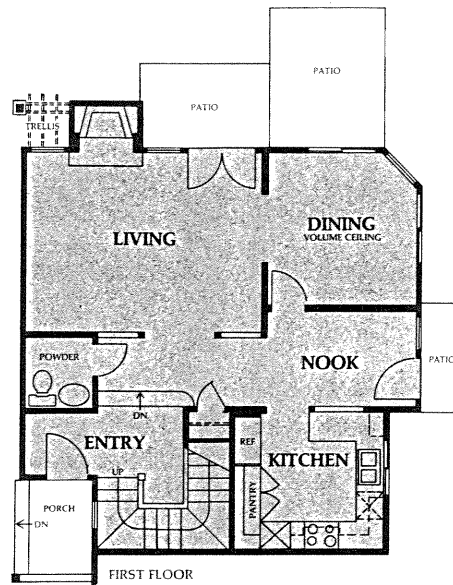


A

As you enter from the stately front porch, linger for a moment on the raised entry landing. The eye is drawn immediately through decorative wood columns and out into the expansive living room. Picture windows on either side of the fireplace open the living areas to water views. Above the fireplace is a display niche, typical of the meticulous detailing you will find throughout The Manors. The dining room, with its soaring 16-foot ceiling, octagonal recessed lighting cove, and 270-degree water views, is nothing less than spectacular. The airy feel of the dining room continues through the charming breakfast nook and into the kitchen, with its striking driftwood-finish oak cabinetry. As you progress upstairs, a large window washes the stairwell with natural light. Just off the elegant master suite is a private deck, the perfect spot to sip your after-dinner coffee and watch the evening clouds drift over the lagoon.

D E L M A R
P L A N A
2 BEDROOMS, 2-1/2 BATHS
1,447 SQUARE FEET



DETACHED