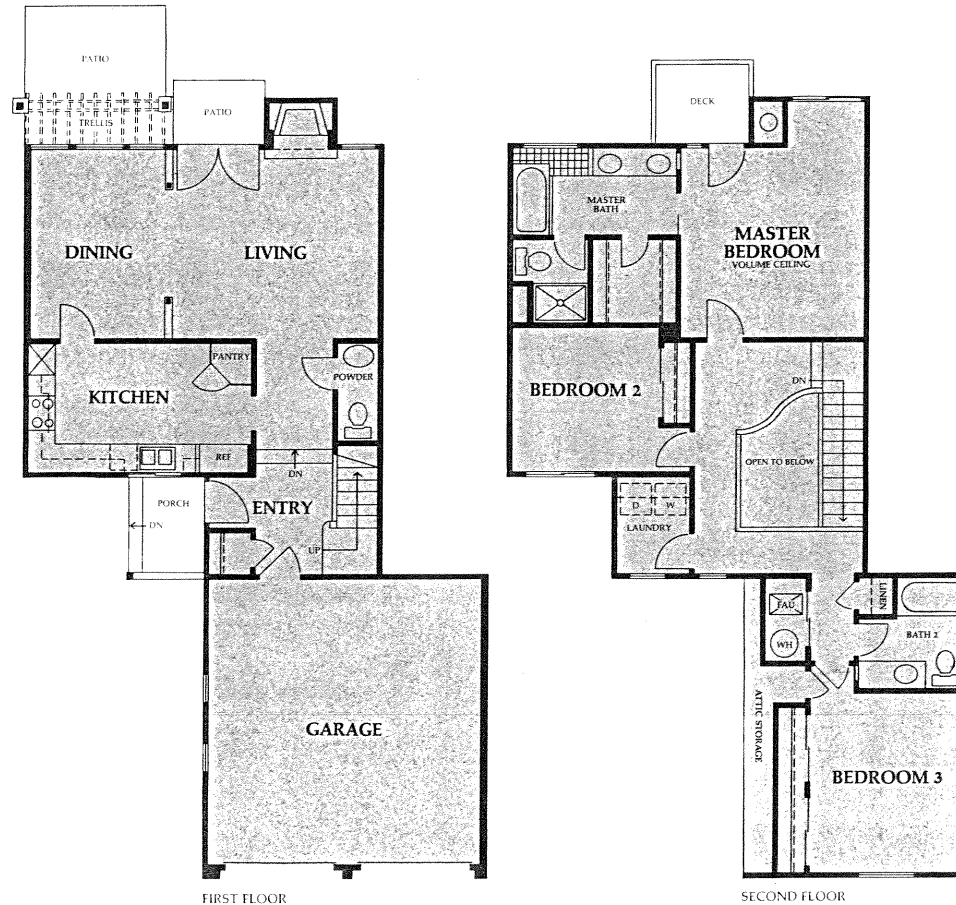


**F**

rom the moment you step into the dramatic entry, you are surrounded with an aura of sophistication. A sweeping staircase leads upward to the graceful curve of the landing high overhead. The large country kitchen with its abundant light and generous pantry offers plenty of room for casual dining. As you continue into the uncommonly spacious formal dining room, your attention is captured by an expansive wall of windows that overlooks the water or a private backyard. The decorative divider between the dining room and the living room contributes to a feeling of time-honored craftsmanship. In the master bedroom, a cozy windowed alcove is ideal for a desk or chaise. The master bath, with its tiled bench and four-foot square picture window above the tub, is a statement of luxury. The full-size laundry room and generous attic storage are features seldom found in a townhome floor plan.

P L A N B  
 3 BEDROOMS, 2-1/2 BATHS  
 1,733 SQUARE FEET



Artist's conception of floorplan.